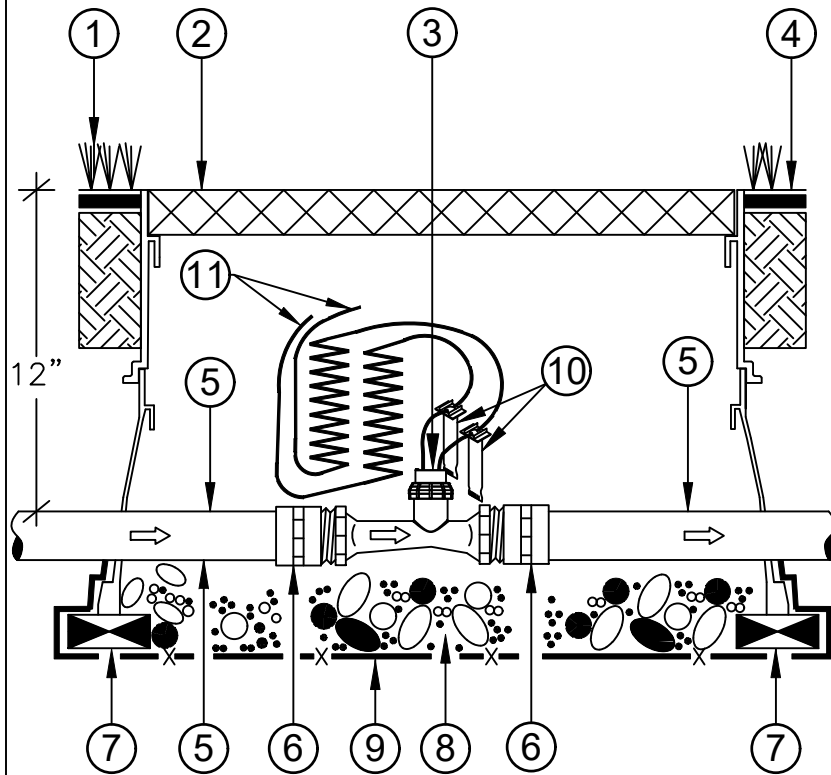




**Creative Sensor Technology**

TEL: + 508-763-8100



- ① PLANT MATERIAL.
- ② VALVE BOX, SIZE TO FIT.
- ③ FLOW SENSOR, 1", MODEL # ELF-T10-N01. THREADED, 1" MPT BOTH ENDS.
- ④ FINISHED GRADE.
- ⑤ 1" PVC MAINLINE PIPE, CL-200 UNLESS OTHERWISE NOTED.
- ⑥ COUPLING, SCH40 PVC, (SLIPxFIPT).
- ⑦ BRICK SUPPORTS, INSTALL UNDER ALL 4 CORNERS OF VALVE BOX.
- ⑧ WASHED PEA GRAVEL, FILL TO BOTTOM OF PVC PIPE.
- ⑨ FILTER FABRIC WRAP UP ALL SIDES OF VALVE BOX.
- ⑩ WATERPROOF WIRE SPLICE, 3M DBY OR EQUIVALENT.
- ⑪ DIRECT BURIAL TWISTED PAIR SHIELDED CABLE, MINIMUM CONDUCTOR SIZE 20 AWG. DO NOT EXCEED 200 FEET IN LAYING DISTANCE FROM FLOW SENSOR TO IRRIGATION CONTROLLER.



## ELF-T10-N01, 1" FLOW SENSOR

N.T.S.

328485.08-02